

Essential Visco Cushion



Dual layered Comfort



The *Invacare Essential Visco* Cushion has a dual layer, using a combination of high density temperature sensitive visco elastic foam in conjunction with a highly resilient foam base to provide added support and longevity. The *Essential Visco* Cushion is suitable for those who require added comfort when in a wheelchair.

Visco elastic (memory) foam top

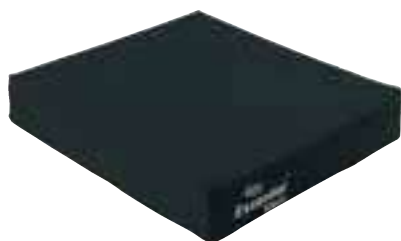
The top layer of the cushion is made from high density visco elastic (memory) foam, which conforms to the shape of the body combining exceptional comfort with a fully supported feeling.

Robust Foam Base

The high density foam base provides added support whilst preventing the cushion from bottoming out, ensuring longevity of the product.



Features and Benefits



Ingress resistant cover as standard

Black smooth, high quality, water repellent zipped cover as standard. The fabric allows water to 'roll off', protecting the foam core from soiling. A platilon liner is also available as an option.



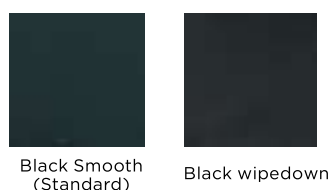
Available in a wide range of sizes

The Invacare Essential Visco cushion is available in 75 sizes, ranging from 9-20" widths and 9-21" depths (see size chart for details).

Technical data

 Various sizes	 Height	 Max. user weight	 Total product weight	 Max. cleaning temperature	 Warranty	Manufactured to European Standards: BS7176-16
Wide range of sizes	Height: 3"/ 76.2 mm	Max Client Weight: 17 stone (108kg)	Weight: 1 kg	Cleaning: 80°	2 years	

Cover options



WIDTH

		23	25	28	30	33	36	38	40	43	46	48	51
		9	10	11	12	13	14	15	16	17	18	19	20
DEPTH	cm												
	inch												
	23												
	25												
	28												
	30												
	33												
	36												
	38												
	41												
	43												
	46												
	48												
	51												
53													